

## Suite Life... reimagined

Whether it's to wow or to woo, those looking to impress will find the ultimate upscale surroundings in the Doyle Collection's array of luxury suites. Confidently curated design and elegantly sumptuous comfort combine to create the perfect escape



### THE KENSINGTON, LONDON

Be it the regal splendour of The Brompton's four-poster bed, free-standing Victorian roll-top bath and Waterford crystal chandelier, or the contemporary charm of The Knightsbridge's circular day bed, marble bathroom with Jacuzzi and balcony overlooking leafy Queen's Gate, these signature suites, which may be combined, offer supreme comfort and space.

Set on the fifth floor, characterful Studio Suites offer a luxury form of loft living.

### THE WESTBURY, DUBLIN - A MEMBER OF THE LEADING HOTELS OF THE WORLD

One of a kind, the ultra-exclusive, award winning Presidential Suite is marked out by its generous size and total privacy. This secluded enclave occupies a tucked-away wing of the hotel, with the 1,500ft<sup>2</sup> (140m<sup>2</sup>) living space comprising a separate living area with chic bar, dining area and lounge, decorated with sleek designer furniture and original artworks, while the exceptionally large bathroom comes with double vanity unit, and separate shower, steam room and sauna.

Meanwhile, the hotel's Luxury Suites' sleek décor exudes an understated comfort to complement their panoramic views across the city.







## THE MARYLEBONE, LONDON

Few – if any – London hotel suites can compare with The Marylebone's Terrace Suites for style or space.

As their name implies, these havens of contemporary style boast a large outdoor spaces looking out over the London skyline complete with sofas, Eames-inspired chairs, dining table, an in-built gas fireplace and TV, all decorated in a chic Zen style with retractable roof and blinds. Inside, the rich hardwood floors and arabascato marble bathrooms feature Starck, B&B Italia and Porta Romana furnishings and lighting, while contemporary artwork lends a bold, sleek feel, setting the seal on the supremely well appointed spaces.

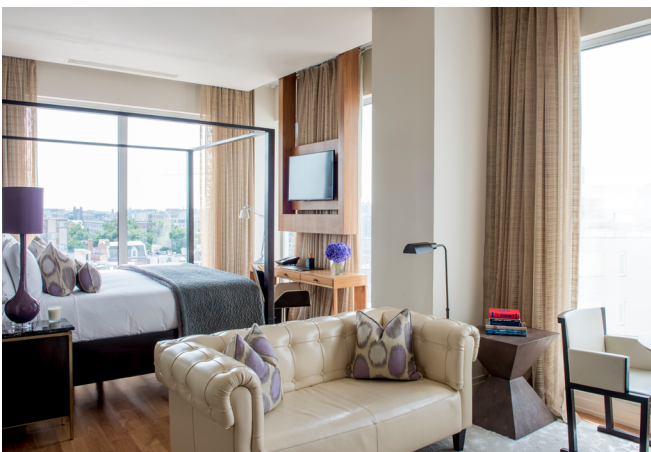
**The Marylebone Suite** - voted *Best Hotel Suite 2017* at *The European Hospitality Awards 2017*



## THE BLOOMSBURY, LONDON

The newly refurbished Luxury Studio Suites reflect the stylish transformation played out across the hotel. Showcasing slick blinds and wooden parquet floors, studio living takes on an elegant yet lavish vibe in these suites. Earthy, natural tones lend a sense of calm and space, while sliding wooden doors provide a sweeping entrance to the Italian marble bathroom, complete with walk-in shower and free-standing bath.

From the statement wallpaper by Colefax to classic Bentwood chairs, it's the playful touches in the main bedroom and living space that give these suites a homely feel. Meanwhile, the central light in the shape of a flapper dress gives a nod to the hotel's 1920s heritage.



## THE DUPONT CIRCLE, WASHINGTON DC

Our Washington DC's stunning Penthouse Suite extends over an enormous 2,041 sq ft, spread out over two floors of beautifully decorated living space and amenities to form the ultimate home-from-home. It sits on the exclusive 9th floor, which boasts its own private lift and lounge, and a range of studio and luxury suites, some with private balconies and all with panoramic city views.

### STANDARD SUITE AMENITIES (London and Washington DC)

#### Studio Suites:

Free Wi-Fi | In-room Nespresso coffee machine | Fresh fruit on arrival  
Complimentary daily newspaper | VIP Turndown service

#### Luxury Suites:

*All of the above including...*

Freshly-cut flowers | Complimentary Mini-bar (soft drinks) | A la carte breakfast

#### Signature Suites:

The Marylebone: Terrace Suites

The Kensington: Knightsbridge Suite & Brompton

*All of the above including...*

VIP welcome fruit basket | In-suite check-in | Dedicated guest liaison during stay  
Cocktail butler (one cocktail per person) | One in-suite Afternoon Tea (for two)  
Complimentary pressing of 2 garments per day

**CONTACT YOUR TZELL AGENT TO BOOK OR VISIT <https://www.tzell.com/contact/>**